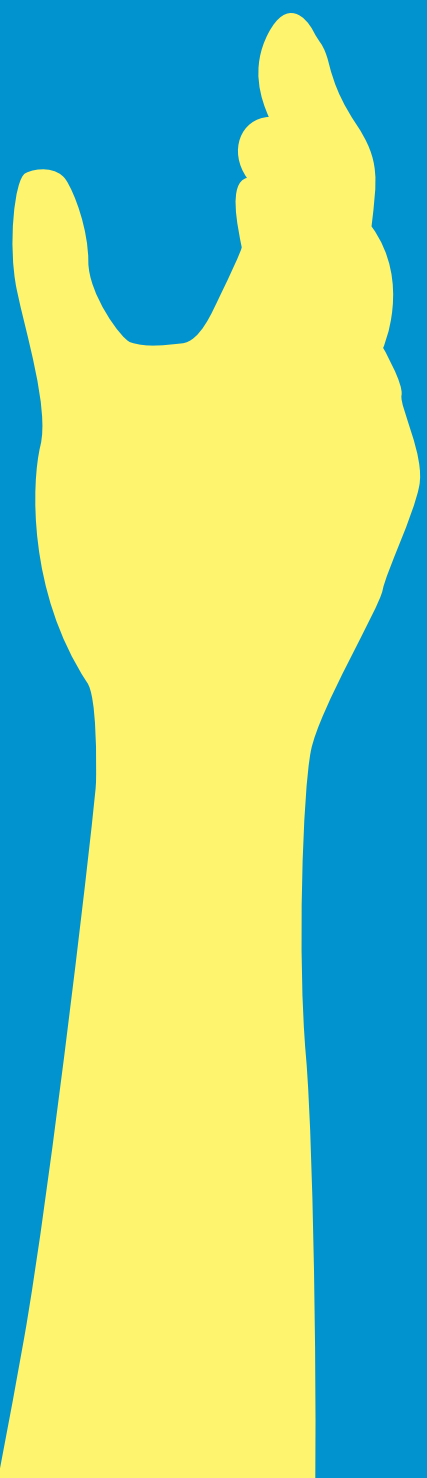


WORKPLACE GIVING IN YOUR WORKPLACE



LINKING
GOOD
PEOPLE
WITH GOOD
CAUSES



THE
GREATER
GOOD
WAY

The Capital Region Community Foundation

greater[®]
good

CONTACT US AT
(02) 6207 9800
WWW.GREATERGOOD.ORG.AU
OR BY EMAILING
PUBLICTRUSTEE@ACT.GOV.AU
WWW.PUBLICTRUSTEE.ACT.GOV.AU



PUBLIC TRUSTEE
FOR THE AUSTRALIAN CAPITAL TERRITORY
WILLS • ESTATES • POWERS OF ATTORNEY • TRUSTS

WORKPLACE GIVING IS

A CONVENIENT AND EFFECTIVE METHOD FOR WORKERS TO REGULARLY DONATE FOR CHARITABLE CAUSES THROUGH AUTOMATED PAYROLL DEDUCTIONS

Workplace Giving is a voluntary programme to help charities and, under a pre-tax system, delivers the immediate benefit of the tax deduction.

EMPLOYER BENEFITS

ASSOCIATES THE ORGANISATION WITH CHARITABLE INTENT

Raises corporate profile in the community

ENHANCES THE BOND WITH EMPLOYEES

Allows matching of employee donations

A STRONG TEAM AND MORALE-BUILDING TOOL

Cost effective with minimal administration

EMPLOYEE BENEFITS

100% TAX DEDUCTIBILITY

Group certificate records amount donated

FLEXIBILITY TO JOIN, ALTER OR WITHDRAW AT ANY TIME

Contribution can be varied to suit budget

ENHANCES THE RELATIONSHIP BETWEEN STAFF MEMBERS

Free of pressure from fundraisers

PRACTICAL, HASSLE-FREE AND HIGHLY EFFECTIVE



WHAT IS GREATER GOOD?

GREATERGOOD LINKS GOOD PEOPLE WITH GOOD CAUSES

Our focus is to encourage us all to be philanthropic to establish our own named funds, preserving capital and producing perpetual income to help charities

GreaterGood is Canberra's own perpetual charitable trust established in 2003 by the Public Trustee

GreaterGood provides

- the integrity and security of a permanent, professional trustee
- a respected honorary board of governors
- audit by the ACT Auditor-General
- no establishment fees
- tax deductibility and
- regular statements of account

ADMINISTERING A WORKPLACE GIVING SCHEME IS EASY

THE GREATERGOOD SCHEME FITS MOST PAYROLL SYSTEMS

It's as easy as-

- 1 Encouraging staff to participate
- 2 Completing a payroll deduction form
- 3 Recommending charities that will benefit
- 4 Reporting progress ie. newsletters

We'll help with the rest...

WHY GREATER GOOD?

IT COSTS YOU NOTHING TO ESTABLISH

A perpetual account in a workplace name will provide the focus to ensure the success of the project

Donations accumulate in the fund adding to the feeling of achievement and motivating staff.

Staff will watch their workplace fund grow and recommend charities to benefit from the annual income.

The value of income distributions to charities over time will conceivably exceed the value of capital donations.

A GIFT FOREVER

A Gift to your scheme will be forever. Every dollar donated will remain in the account as capital forever earning income. Income generated is distributed annually on a perpetual basis.

CREATE YOUR OWN LASTING LEGACY GREATERGOOD THE GIFT THAT KEEPS ON GIVING.

